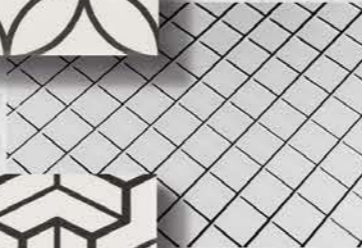
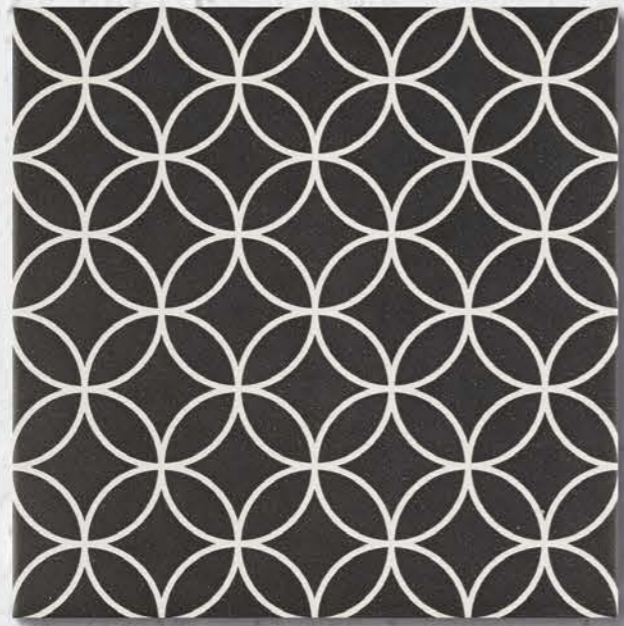
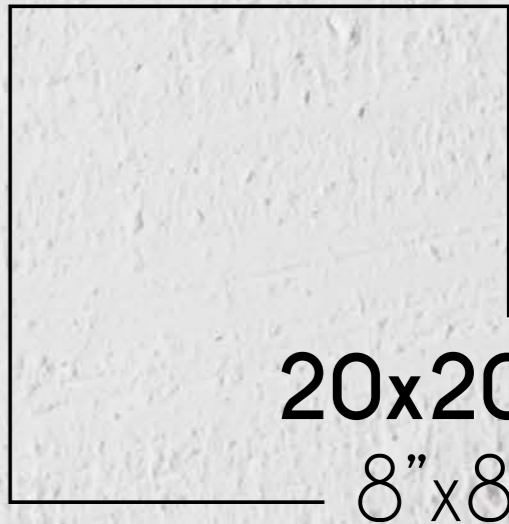


• • • • •  
**BACKSTAGE**  
T R E N D S



**ZENIT  
SAMARA**  
PORCELAIN TILE



**20x20**  
8"x8"



**OPTYM**  
ORIGINAL PORCELAIN TILE

**MAINZU**  
PORCELAIN

ZENIT / SAMARA

20x20 · 8"x8"

BACKSTAGE  
TRENDS



ZENIT BLACK  
20x20 (M 280) 8"x8"

ZENIT WHITE  
20x20 (M 280) 8"x8"

WHITE  
& BLACK

RICA BLACK  
20x20 (M 280) 8"x8"

OPTYM  
ORIGINAL PORCELAIN TILE

MAINZU  
PORCELAIN

Zenit White 20x20 · 8"x8"

ZENIT / SAMARA  
20x20 · 8"x8"

BACKSTAGE  
TRENDS

Zenit White 20x20 · 8"x8"  
Zenit Black 20x20 · 8"x8"

ZENIT / SAMARA  
20x20 · 8"x8"

BACKSTAGE  
TRENDS

Samara White 20x20 · 8"x8"  
Riga Black 20x20 · 8"x8"

# ZENIT / SAMARA

## 20x20 · 8"x8"



Samara White 20x20 · 8"x8"  
Riga Black 20x20 · 8"x8"

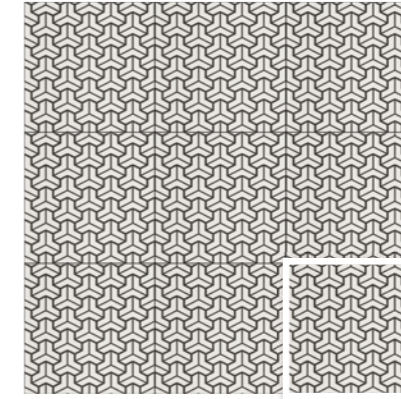
# BACKSTAGE

## TRENDS

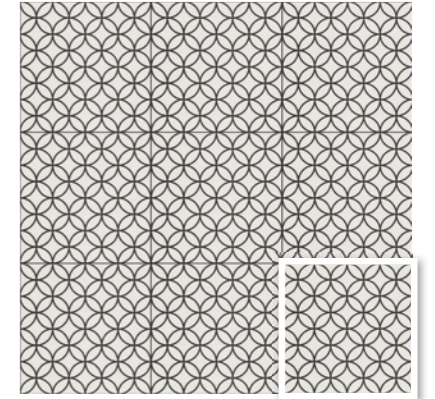
PIEZAS · PIECES



**RIGA WHITE**  
20x20 (M 280) 8"x8"



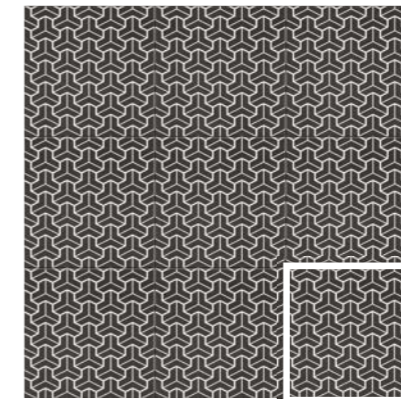
**ZENIT WHITE**  
20x20 (M 280) 8"x8"



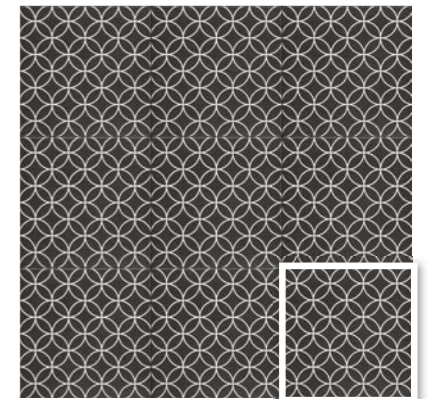
**SAMARA WHITE**  
20x20 (M 280) 8"x8"



**RIGA BLACK**  
20x20 (M 280) 8"x8"



**ZENIT BLACK**  
20x20 (M 280) 8"x8"



**SAMARA BLACK**  
20x20 (M 280) 8"x8"

### CARACTERÍSTICAS TÉCNICAS · TECHNICAL CHARACTERISTICS



**ANTIDESLIZANTE**  
ANTI SLIP



**PAVIMENTO Y REVESTIMIENTO**  
FLOOR & WALL TILE



**COLORES INALTERABLES**  
UNALTERABLE COLORS



**RESISTENTE AL DESGASTE**  
WEAR RESISTANT  
PEI IV



**RESISTENTE AL RAYADO**  
SCRATCH RESISTANT  
MOHS 6



**RESISTENTE A LAS MANCHAS**  
RESISTANT TO STAINS  
CLASE 5



**RESISTENTE A LOS QUÍMICOS**  
RESISTANT TO CHEMICALS  
GA-GLA-GHA



**MATE**  
MATT



**IMPERMEABLE**  
WATER RESISTANT



**ECOLÓGICO**  
ECOLOGIC



**HIGIÉNICO**  
HYGIENIC



**IGNÍFUGO**  
FIREPROOF

### USOS · USES



**INTERIOR ESPACIO DOMÉSTICO**  
DOMESTIC SPACES (INDOORS)



**INTERIOR ESPACIO PÚBLICO**  
PUBLIC AREAS (INDOORS)



**EXTERIOR ESPACIOS SIN AGUA**  
OUTDOORS WITHOUT WATER



**REVESTIMIENTO VASO PISCINA**  
INTERIOR OF THE POOL

**OPTYM**  
ORIGINAL PORCELAIN TILE

**MAINZU**  
PORCELAIN

### PACKING

MEDIDAS	PIEZAS / CAJA	PIEZAS / M <sup>2</sup>	CAJA / PALLET	PESO / M <sup>2</sup>	PESO / PIEZA	PESO / CAJA	M <sup>2</sup> / PALLET	PESO / PALLET	VENTA
20 x 20 · 8" x 8"	25	25	75	18,91	0,76	18,91	75	1.418	M <sup>2</sup>